



## **NANNA**

Emo, lonely, considerate

## **HUS FREJA**

(Fertility, an open mind,  
tolerance, love)

On the day you started school at Trudvang, it felt like the world closed in around you. The road ahead stretched out like a tunnel. No freedom of movement, only the path already chosen for you by others. Everyone in your family has found themselves at home in House Freja. Of course, some of them tried one of the other Houses, just to make sure they were in the right place, but nobody has ever chosen a different House, apart from Magne. You thought that you might as well start with Freja and get it over with. Your mother also told you that she was looking forward to you becoming part of her House. So now you're here, and it's sort of OK. You don't have that feeling the others say they have, that their House is like a pair of comfortable slippers that just fit you. That in your House, you feel free to think, feel and say what you like, and the other students feel like extended family. Maybe that feeling will come to you as well? At any rate, you can't switch Houses. You take family tradition seriously, and will do what you can to make those at home proud. Especially since your twin brother Magne doesn't care about tradition and does exactly as he pleases. He's switched Houses every single semester since you started school. Right now, he's in Njord of all places. Wonder what he'll do once he's tried every House and found he doesn't fit in anywhere? He's always the happy-go-lucky and naïve optimist, and even if part of you wishes for your brother to get a reality check, you also worry about what will happen once he learns how harsh the world can be. It can be a sad, dark place. What if Ragnarok actually comes one day? He'll be completely unprepared! But if Ragnarok does come, nothing might matter at all?

Sometimes you wish you could just lie on your bed, listen to music and ponder the fleeting nature of life. But that's really hard to fit

into your schedule when Magne's in trouble and you have Runes homework. You really want to dye your hair black, but everyone says the chemicals are bad for the environment.

You're worried that progress in the world might not be happening fast enough. Who cares about the Nisse labour laws ensuring sick pay and annual leave? Are they even paid wages? There are so many magical creatures being mistreated in the magical community! Take werewolves, for example - what harm did they ever do? Sure, there's that thing about biting people when there's a full moon, but they can't help that they have a medical condition, now, can they? Somebody should really do something about it!

### **THE MAGICAL PENTATLON**

Back when it was called The Triwizard Tournament, those who were physically strong - you guessed it, men - were totally the favourites. It was a complete testosterone fest for dudes to pat each other's backs and show off. Apparently it's supposed to be different now, and maybe the wizarding world is finally moving into the 21st century (but, really, it's still called the WIZARD world, right?) Better not get your hopes up, you'll just end up disappointed. But Magne's been talking about that competition so much that you sometimes find yourself planning how you'd do it. But it'd probably be a total suck fest. Nobody would probably join the team anyway. At least not if you asked. Everybody thinks it's the worst. If you were in it, you'd probably be the one in charge of Spells. That's your best subject. You could join for Magne's sake and help him stay out of the trouble he usually gets himself into. You're not even sure you can get out of participating, because lately you've started Seeing things when you use intestines to tell the future. You can see the threads converging and pointing in the same direction: Towards a battle that must be fought.

### **HOUSE FREJA**

You wish for nothing more than to one day wake up and actually feel like you fit in. Like, for real. Sadly you don't think that's going to happen. But you don't really want to be anywhere else, either. You'd disappoint your family at home so much, and which other House would you even pick? Where do you even fit in? Are you cursed to be a desolate asteroid floating through space, alone forever?

## THE OTHERS

**Magne** is your twin brother, and he's both the most annoying person you know, and the one who you can always trust to back you up. He's not very good at concentration, and even if he can do it, it doesn't really show in his grades. You sometimes wish he'd take things more seriously, but at the same time, it's alright to be reminded that things aren't always that bad.

**Ene** can do everything. It's the truth, but does she really have to say it all the time? She could try and live in the present a bit more, too. It's kinda sad to always focus on what you might achieve some day, and not what you have right now. You're not even sure there's even a future for any of you, with all the global warming.

**Lauge** is Magne's misunderstood friend. "Misunderstood"... well, he's really, really slow on the uptake for someone so intelligent. Some things you just don't say! Really, he's so fucking annoying. You don't really know why he bothers you so much. He's just got something about him. Sometimes you lie awake at night, thinking about why you can't stop thinking about him.

**Solveig** is like a lone ship at sea. Nooo.. that sounds really cliché, but that's... just what you think. She's fascinating. And brave. And the most beautiful thing you've ever seen. Her large brown eyes, the way she moves... You wish you knew her better. Especially now that you're both in the same House, but she probably just doesn't like you.

## PLAYER TIPS

Especially in the beginning it's fine for you to be the voice of negativity.

The one to remind the others that the rest of the school thinks that the Magical Pentathlon is the stupidest thing ever. Feel free to do this a lot, it'll give you a point of departure from which to develop your character.

Your character really just wants to belong, and maybe you're the one to check in with the others, so they don't split off from the group? You can take things in a romantic direction if you please.

You don't like it when someone is judged in advance. Comment on social injustice, so that the group can either find common ground or start arguing, both are great opportunities for play. You can use elements from the magical world as your point of departure for this.

# TRUDVANG'S NINE HOUSES



**IDUN**  
Athletic  
Industrious  
Persistence  
Perfection



**FRIG**  
Knowledge  
Foresight  
Protector  
Household



**LOKE**  
Trickster  
Changeability  
Inventive  
Creative



**BALDER**  
Beauty  
Artistic  
Innovation  
Abstract



**FREJA**  
Fertility  
open mind  
tolerance  
love



**THOR**  
Brute strength  
Rashness  
Stubbornness  
Bravery



**NJORD**  
The Elements  
Wild Nature  
Selfless  
Meditation



**TYR**  
Animals  
Community  
Defence  
Self-sacrifice

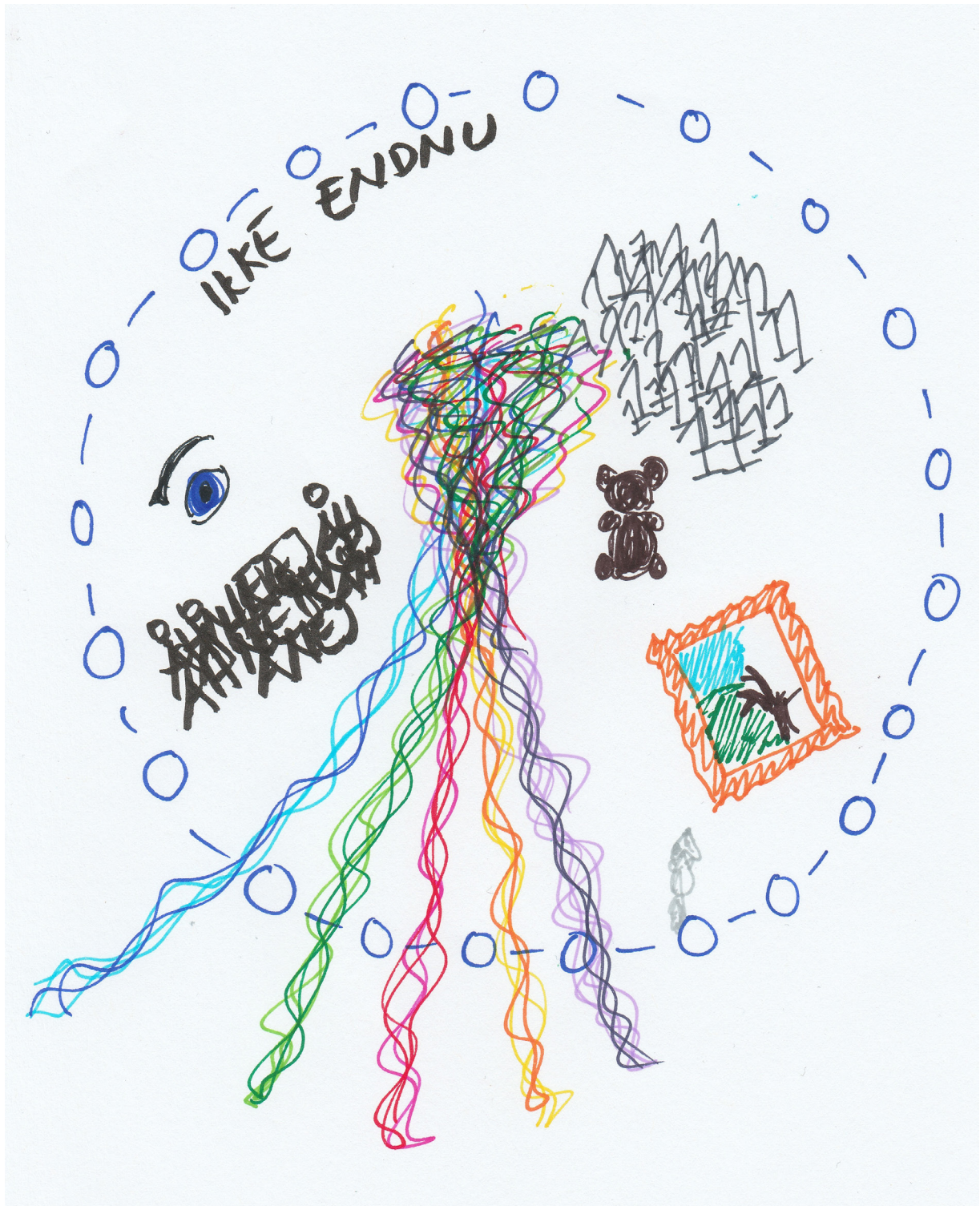


**ODIN**  
Traditions  
Conservativ  
Individualist  
Status Quo





## PROPHESY 1 - NANNA





## PROPHESY 2 - NANNA

